

Thanks are extended to the Laundrette for once again undertaking the selling of tickets for the performances.

Our next show is an exciting village project to celebrate the Millennium, with profits going to the Millennium fund and two local charitable causes. Many societies and clubs in the village are performing but there is still an opportunity for YOU to be involved in this unique event – the script is not finalised yet! If your talents don't lie on the stage, there is plenty of scope backstage or front of house. Maggie Burton is directing the show, so please contact her on 931 2782 for further details.

Otherwise look out for publicity to make sure you buy your tickets early – this is bound to be a sell-out!

The Burton Joyce Players always welcome new members to perform and/or help backstage. In addition to our performances we also meet socially – if you are interested in joining up then phone our secretary, Mary Brigham on 931 2399.

— — — — —
This programme has been designed and printed by



RADMARSH ROAD
NOTTINGHAM
NG7 2GN
TEL: 0115 978 6162
FAX: 0115 942 0028
ISDN: 0115 924 8819



MERCHANDISE IDENTIFICATION

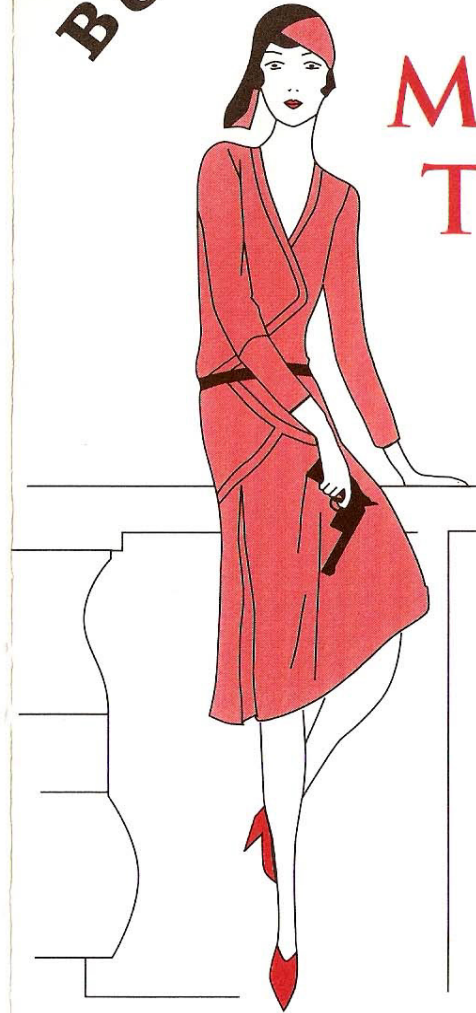
FOR A GLOBAL SOLUTION FOR LABELLING, BARCODE TICKETING & PRINT
PHONE OR FAX ON THE ABOVE NUMBERS OR VISIT OUR WEBSITE:
www.shr2shr.com

THE BURTON JOYCE PLAYERS

MURDERED TO DEATH

The hilarious spoof
by

Peter Gordon



will you unmask the killer,
or die laughing first?

at

**Burton Joyce &
Bulcote Village Hall**

~~Thursday April 22nd~~

Friday April 23rd

~~Saturday April 24th~~

performances start at 7.45pm

Tickets £3.00 (£2.50 concessions on Thursday)
available from "Burton Joyce Laundrette" or on the door

This hilarious spoof in the best of Agatha Christie traditions brings together a cast of characters guaranteed to delight – Bunting the butler; an English colonel with prerequisite stiff upper lip; a shady French art dealer and his moll; the bumbling local inspector and a well-meaning local sleuth – they are all here caught up in the side splitting antics which follow a mysterious death. It soon becomes clear the murderer hasn't finished yet, but will the murderer be unmasked before everyone else has met their doom – or will the audience die laughing first?.....



CAST IN ORDER OF APPEARANCE

Mildred	MARILYN DRAKE
Dorothy	JANE MURRAY
Bunting	RICHARD HICHENS
Colonel Craddock	IAN HICHENS
Margaret Craddock	SUE EVANS
Elizabeth Hartley-Trumpington	DEBORAH CRADDOCK
Pierre Marceau	DAVID JOHNSON
Joan Maple	MARY BRIGHAM
Constable Thomkins	MARK SARIC
Inspector Pratt	MIKE STORR

The action of the play takes place in the lounge of a country manor house in the 1920's.

PRODUCTION TEAM

Director	KATHY SARIC
Stage Manager	MIKE GRAVES
Prompter	JOY GRAVES
Lighting	LES TERRY
Properties	LIZ BREEZE
	MAGGIE BURTON
	CHRIS PLANT
Business Manager	JEAN HICHENS

Our thanks to all members and friends of the society who helped backstage and front of house.



ACT I

Scene One	Late afternoon, Autumn
Scene two	The following morning

Interval of 15 minutes

ACT II

Scene One	Two hours later
Scene two	An hour later

PATRONS ARE KINDLY REQUESTED TO REFRAIN FROM SMOKING IN THE AUDITORIUM